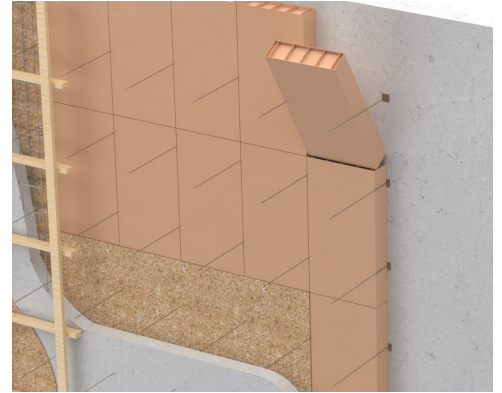


SeparatorVoid™ separates freshly placed concrete walls or slab edges from existing vertical structures.



DESCRIPTION

SeparatorVoid creates a void space between freshly placed concrete and an existing structure or between two concrete elements poured concurrently. Its structural strength is designed to weaken by the gradual absorption of moisture as the concrete sets. Water can be manually introduced to help facilitate the process. The resulting void space isolates existing structures from the new one, preventing transfer of pressure or vibration. These void forms can also be used to isolate backfill materials from bridge abutments and other concrete structures.

SeparatorVoid is comprised of biodegradable corrugated paper types having different strengths and flutes, which are laminated with moisture-resistant adhesive. Each piece can be manufactured with a non-wax back for adhering to the existing surface.

INSTALLATION

1. Keep SeparatorVoid dry at all times prior to concrete placement.
2. Adhere pieces to existing concrete face end-to-end and side-by-side along wall line using a water-based construction mastic.
3. Crosscut pieces with a handsaw to fit into non-modular areas.
4. Insert End Caps on open pieces that will be exposed to concrete.
5. Tape joints to prevent immediate water or concrete silt penetration.
6. Place 1/4" hardboard over the exposed face to protect it from damage, close small gaps, and distribute the working load.
7. Complete form work and place concrete.

DIMENSIONS

Depth: 1" (2.5 cm) to 12" (30.5 cm)

Width: 24" (61.0 cm) - or as indicated

Length: 60" (152.4 cm)

MATERIAL

Cover: B or C-Flute (32-55 ECT)
Corrugated Wax-Coated Paper
(Light Curtain Coat)

Interior: B-Flute (32 ECT)
Corrugated Paper

STRENGTH

Working load as recommended for wall and beam heights from 2' (61.0 cm) up to 20' (6.1 m)



CUSTOM SIZES AND
STRENGTHS AVAILABLE



MADE IN CANADA

VoidForm Products, LLC • 855.888.VOID (8643) • sales@voidform.com • voidform.com