

LedgeVoid™ is a horizontal form that blocks out concrete where brick or stone is to be placed.



LedgeVoid is normally positioned at the top of a grade beam or slab edge to block out concrete where brick or stone is to be placed. It can also be placed vertically between form ties to block out oversized areas. LedgeVoid is designed to withstand lateral and vertical pressures when pouring concrete.

DIMENSIONS

Height: 4" to 24"

Width: 4" to 12"

Length: 48"

DESCRIPTION

LedgeVoid is comprised of a vacuum-sealed, solid foam core with hardboard adhered to one or both vertical faces for attaching to the formwork or wrapped in a wax-coated exterior cover. As shown below, it is available in a variety of widths (A) and depths (B) as well as multiple configurations. All pieces are provided in standard 48" lengths for easy handling and installation.

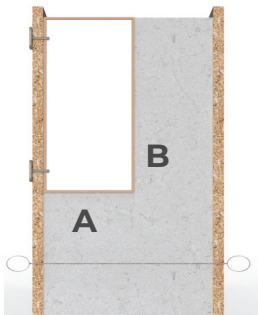
MATERIAL

Cover: C-Flute (32 to 44 ECT)

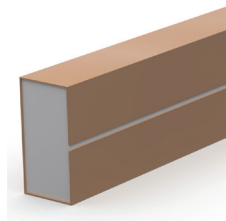
Wax-Coated Corrugated Paper
(Light Curtain Coat)

Core: Expanded polystyrene (EPS)
(Corrugated paper core is optional)

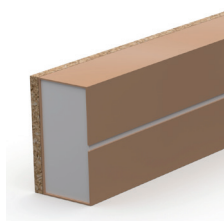
Back: Hardboard or OSB



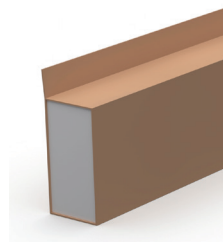
Cross section of LedgeVoid fastened to formwork



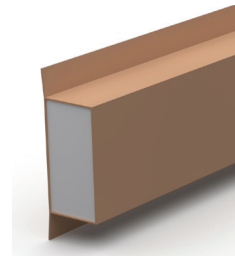
PS/O: Paper-wrapped, solid core, no nailing flange



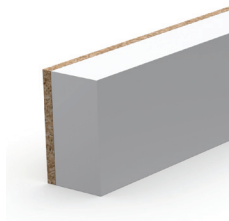
PS/OW: Paper-wrapped solid core, no nailing flange, wood back



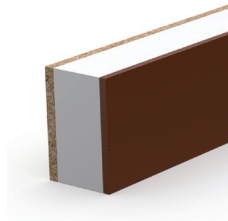
PS/I: Paper-wrapped solid core, 1 nailing flange



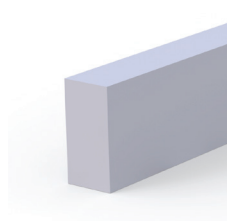
PS/2: Paper-wrapped solid core, 2 nailing flanges



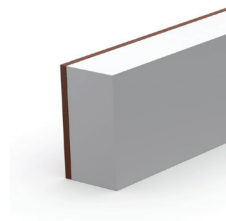
VW: Vacuum-sealed, solid core, wood back



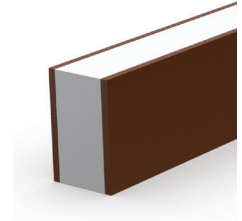
VW/H: Vacuum-sealed, solid core, wood back, hardboard face



VN: Vacuum-sealed, solid core, no back



VH: Vacuum-sealed, solid core, hardboard back



VH/H: Vacuum-sealed solid core, hardboard back, hardboard face