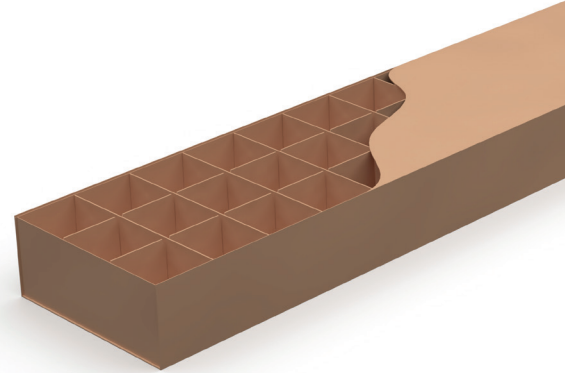


**TrenchVoid®** creates a void space directly under grade beams or walls to protect concrete from heaving soil.



## DESCRIPTION

TrenchVoid temporarily supports freshly placed concrete walls or beams until they become self-supporting, spanning across drilled piers or other foundation elements.

It can be used in both trenched grade beam and formed wall applications.

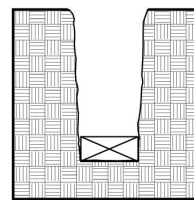
Its structural strength weakens through the gradual absorption of surrounding moisture as the concrete sets. This loss of strength effectively creates a void space into which soil can expand without causing structural damage to the concrete wall or grade beam above.

TrenchVoid is comprised of biodegradable corrugated paper types having different strengths and flutes, which are laminated with moisture-resistant adhesive. The interior cellular support network is surrounded by a wax-coated exterior cover. The components are adhered together and/or held in place with staples.

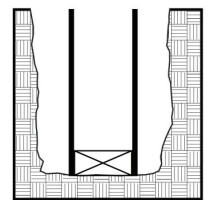
## INSTALLATION

1. Keep TrenchVoid dry at all times prior to concrete placement.
2. Prepare grade to an even, smooth surface.
3. Install ArcVoid® sets or PierVoid® at piers where required.
4. Place void forms end to end in wall line.
5. Crosscut pieces with a handsaw to fit into non-modular areas.
6. Insert End Caps on open pieces that will be exposed to concrete.
7. Place SureCover Board™ over entire top surface to span small gaps and to protect the void forms against punctures and pinpoint loads.
8. Install steel and place concrete.

Earth-Formed



Panel-Formed



## DIMENSIONS

**Height:** 4" to 24"

**Width:** 6" to 30"

**Length:** 60"

## MATERIAL

**Cover:** B-Flute or C-Flute (32 to 44 ECT)  
Corrugated Wax-Coated Paper (Light Curtain Coat)

**Interior:** C-Flute or DW (44 to 51 ECT)  
Corrugated Paper (Kraft or WIM)

## STRENGTH

Working load as recommended for wall and beam heights from 2' up to 20'



**CUSTOM SIZES AND  
STRENGTHS AVAILABLE**